



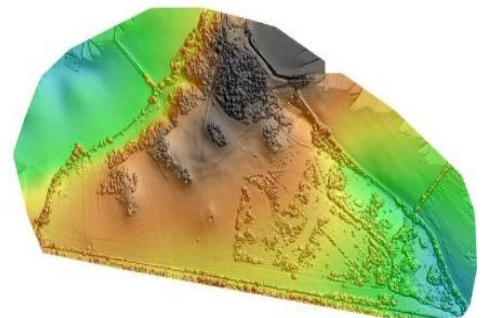
AERIAL SURVEYS

Carcinus Ltd in partnership with Alauda Aerial Surveys Ltd provide a wide range of bespoke aerial survey, remote sensing, mapping and data processing services for freshwater, riparian and coastal environments. Utilising both fixed wing and multi-rotor Unmanned Aerial Vehicle (UAV) platforms, we deliver high quality outputs that meet the specific accuracy and scale demanded by each application. All operations are covered under Permission for Commercial Operations (the PfCO), granted by the Civil Aviation Authority (CAA).

FRESHWATER ENVIRONMENTS

Through the incorporated use of UAV based survey platforms, we provide an innovative, efficient and diverse range of survey services for freshwater and riparian environments. Our services include the following:

- Riparian habitat mapping and monitoring.
- Redd counts and fish spawning habitat assessment.
- Structural and asset surveys.
- Topographic surveys for flood risk assessment.
- Aerial surveys to support catchment-based assessments of sediment, nutrient, pesticide and faecal contamination sources.
- Photomosaics of fishery beats, lakes or aquatic restoration projects for marketing, engagement and monitoring purposes.



Digital surface model derived from data obtained using a SenseFly Ebee Plus UAV with RTK GNSS.



MARINE ENVIRONMENTS

Our UAV service capability offers both a novel and cost-effective means of surveying marine environments not normally accessible or too extensive to safely and efficiently survey by traditional means. We provide the following cutting-edge marine aerial survey services:

- Enhanced Phase I (and extended Phase I) habitat surveys, enabling efficient survey of wider / harder to reach areas.
- Monitoring of unlicensed activities such as bait digging, crab tilling and shellfish harvesting.
- Monitoring coastal change, erosion and accretion.
- Macro-algae and saltmarsh extent and health monitoring by an unobtrusive and non-destructive means of surveying.

OUTPUTS AND DELIVERABLES

All outputs are designed to meet our clients' needs, ensuring the accuracy and scale are targeted to the specific requirements of the project and meets regulatory requirements. Outputs typically comprise:

- 2D photogrammetry and photomosaics.
- Point clouds, mesh, 3D models and BIM level modelling.
- Digital Surface and Terrain Models (DSM & DTM).
- Multispectral analysis.
- Habitat maps.



Sensefly eBee fixed wing mapping UAV with RTK positioning.



Multi-rotor UAV (hexacopter) surveying coastal environment.

Carcinus Limited

Wessex House, Upper Market Street
Eastleigh, Hampshire, SO50 9FD
United Kingdom
T: +44 (0)2381 290095
Email: enquiries@carcinus.co.uk
<https://www.carcinus.co.uk>



Alauda Aerial Surveys Ltd

1, Cherry Walk,
Southampton,
SO15 5GD
United Kingdom
T: +44 (0)7854 078024
Email: info@alaudasurveys.com
<https://www.alaudasurveys.com>