



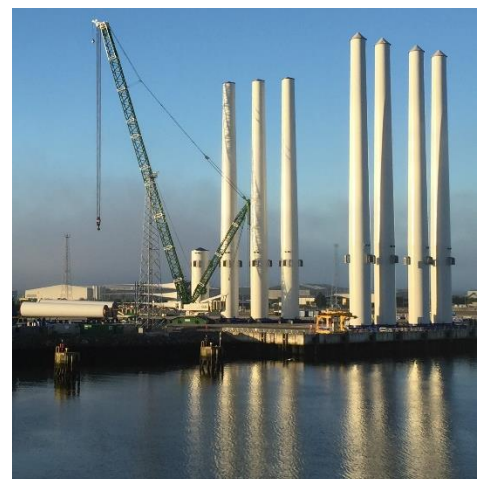
# ENVIRONMENTAL ASSESSMENT

**Carcinus Ltd delivers scientifically robust and regulatory compliant environmental assessments including marine and freshwater Environmental Impact Assessments (EIA), Habitats Regulations Appraisals (HRA) and Water Framework Directive (WFD) assessments to support clients with development projects in and near aquatic environments.**

## ENVIRONMENTAL IMPACT ASSESSMENT

An EIA is a process that aims to identify the environmental effects of a proposed activity, project, policy or plan and to ensure that the competent authorities are fully informed and can make decisions in full knowledge of the likely effects on the environment. Carcinus provides the following services in relation to the delivery of EIAs:

- Screening to determine the requirements for an EIA.
- Scoping to identify issues to be considered within the EIA.
- Consultation and engagement with regulators, stakeholders and local interested parties.
- Baseline data collection including desktop studies and ecological field surveys.
- Identification and assessment of impacts sensitive receptors.
- Mitigation and compensatory options to reduce or offset identified impacts to acceptable levels.
- The preparation and submission of consent and planning documentation.
- Post-construction or post-consent monitoring and discharging of license conditions.



Offshore wind turbine towers at port



### HABITATS REGULATIONS APPRAISAL

Carcinus is experienced in supporting developers in relation to their obligations under Habitat Regulations for aquatic Annex I habitats and Annex II species, providing the necessary information in a scientifically robust report known as a 'report to inform Appropriate Assessment' or 'shadow HRA'. Carcinus provides the following services:

- Ecological desk studies and surveys designed, managed and delivered to support HRA screening.
- Shadow HRA assessments to determine if a likely adverse effect.
- Designing and specifying mitigation options or identifying compensatory measures to offset effects.
- Liaison and consultation with regulators throughout the HRA process.

### WATER FRAMEWORK DIRECTIVE

Carcinus provides a range of ecological, water quality and hydromorphology consultancy and survey services to support WFD assessments, including:

- Ecological surveys (macrophytes, invertebrates and fisheries).
- Catchment walkover surveys.
- Habitat mapping.
- Water and sediment quality studies.



*Sabellaria alveolata* reef



Banded demoiselle

### Carcinus Limited

Wessex House, Upper Market Street  
Eastleigh, Hampshire, SO50 9FD  
United Kingdom  
T: +44 (0)2381 290095  
Email: [enquiries@carcinus.co.uk](mailto:enquiries@carcinus.co.uk)  
<https://www.carcinus.co.uk>

